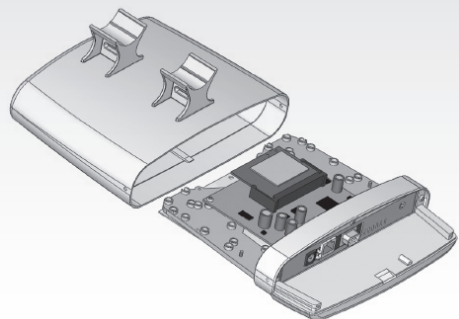
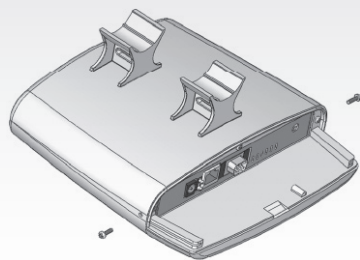


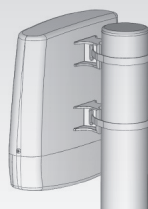
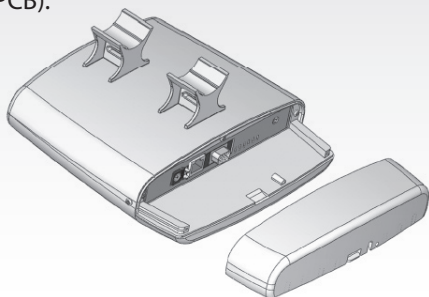
**STEP 9** Whole entity fix by using 2 screws according to the picture.



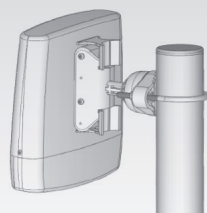
**STEP 10** Whole entity fix by using 2 screws according to the picture.



**STEP 11** The StationBox™ is completed now and you can close it with Removable cover (before placing the Removable cover you can connect appropriate cables to your PCB).



The StationBox™ can be installed on the mass or console by using applied Cable ties.



The Stationbox™ can be installed on the mass, console or wall by using our NanoBracket™  
**Note: NanoBracket™ is sold separately**

## Installation manual

## Installation manual

The packaging includes following components:

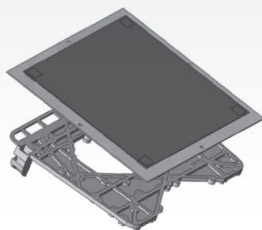
- |                         |   |  |
|-------------------------|---|--|
| • Top cover – 1pc       | • Screws:   | Complete list of available antennas and more details about StationBox™ outdoor enclosure you can find at: <a href="http://www.stationbox.info">www.stationbox.info</a> |
| • Lower part – 1pc      | • 2,9 x 22mm – 8 pcs  |  |
| • Removable cover – 1pc | • 2,9 x 9,5mm – 13 pcs  |  |
| • Base – 1pc            | • Cable ties 300 x 7,8 mm – 2 pcs   |  |
| • Panels – 4 pcs        | • Appropriate antenna (only in case you bought StationBox™ with integrated antenna) |  |
| • Spacers:              |   |  |
| small spacers – 8 pcs   |   |  |
| big spacers – 10 pcs    |   |  |

Product of RF Elements, s.r.o. Made in China.  
[www.rfelements.com](http://www.rfelements.com)

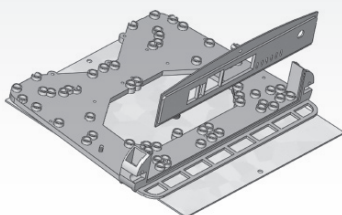


# STATION BOX™

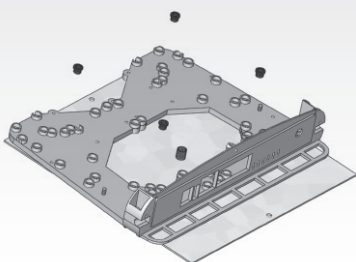
**STEP 1** (2.4GHz version ONLY! For 5.8GHz version, skip this step.) Mount antenna element to backside of part "Base". Set the antenna in either vertical or horizontal polarization, according to your needs. Attach antenna using supplied screws. This option is not mandatory and depending on the type of antenna, may be excluded.



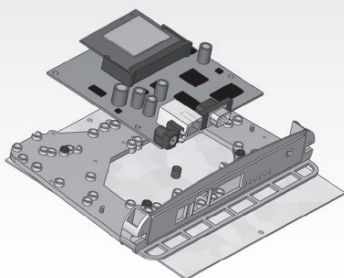
**STEP 2** Insert panel into the gap in the part "Base". Choice of the panel depends on board you want to use for installation in StationBox™. The package of the StationBox™ includes 4 different types of panels dedicated for 4 different boards. Other panels can be ordered at your supplier.



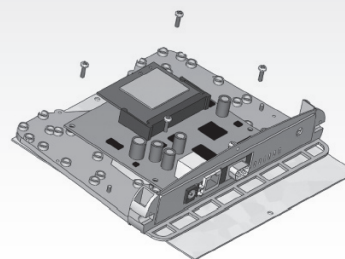
**STEP 3** Insert Spacers into appropriate holes on the part "Base". Amount of Spacers and its location depend on the type of board you want to install.



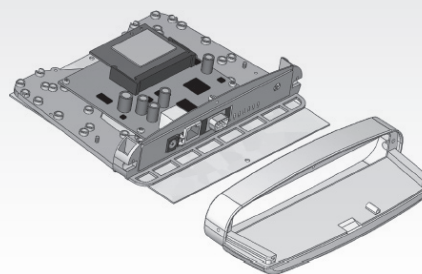
**STEP 4** Place the board of your device into holes on the front side of part "Base" and on appropriate positions considering the Spacers.



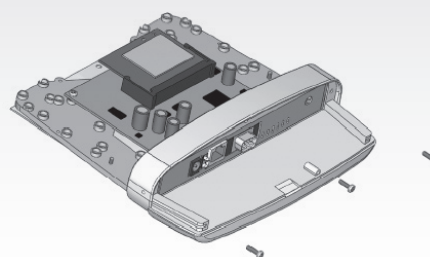
**STEP 5** Screw the board of your device by using applied screws. Amount of the screws depends on amount of the Spacers that are used for your board.



**STEP 6** Insert Lower part into "Base" according to the picture.



**STEP 7** Fix the Lower part by using 3 applied screws.



**STEP 8** (5.8GHz version ONLY! Do this step if you skipped Step 1.) Attach antenna using 2 screws at the upper part of antenna (using free holes), according to the picture. Then, connect the pigtail to the radio.

