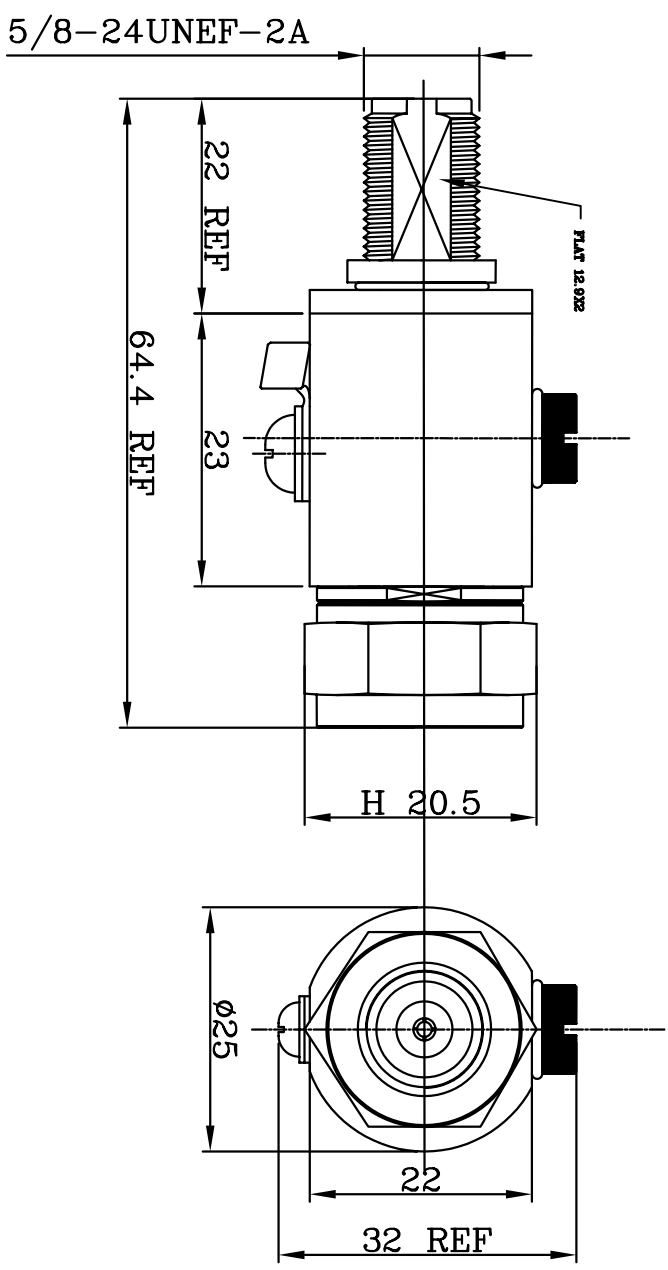
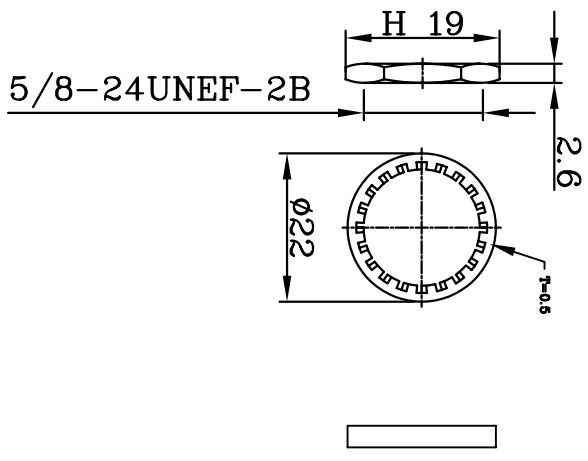


REV	DESCRIPTION	DRAWN	DATE




Lightning Protector 6GHZ
 Frequency 2-6GHZ
 VSWR 1:1.7Max
 Insertion Loss 0.9dBi Max
 Impedence 500hm
 Gas Tube DC 230V±20%
 Breakdown Vol tage $\leq 700V$
 Gas Tube Impulse $\leq 700V$
 Breakdown Vol tage $\leq 700V$
 Gas Tube Insulation $\geq 10000M \text{ Ohm}$
 Resistance
 Max Withstand Current 5 K V
 RF Power Rating 15W

UNLESS OTHERWISE SPECIFIED
 1.REMOVE ALL BURRS
 2.BREAK ALL CORNERS & EDGES CO.1.5 MAX.
 3.CHAMFER 1ST & LAST THREADS 45°.
 4.DIAMETERS ON COMMON CENTERS
 TO BE CONCENTRIC WITH DIMENSIONS ARE AFTER PLATING.

* MAJOR DIMENSION
 UNLESS OTHERWISE NOTED TOLERANCES
 0.5-6 = ± 0.2
 6-30 = ± 0.4
 30-120 = ± 0.6
 120-315 = ± 1.0
 ANGLES = $\pm 1^\circ$

APPROVED
 CHECKED
 DRAWN Vincent
 DRAWN DATE 03/11/29


華耀科技有限公司
 Hua Yao Technologies co.,Ltd
 Lightning Protector N(m)-N(f) BKD
 DRAWING NO. LP-14
 FILE NO. D:\DWG\Lightning Protector N(m)-N(f) BKD\LP-14