

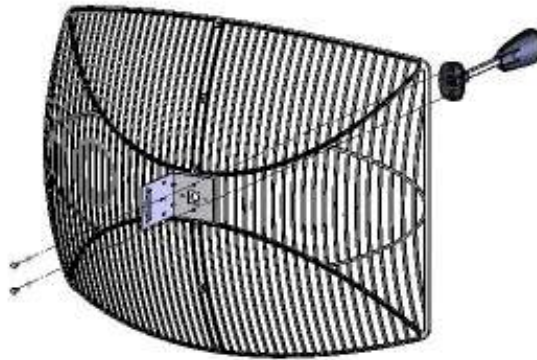
## FEED-005

### Packing Check List

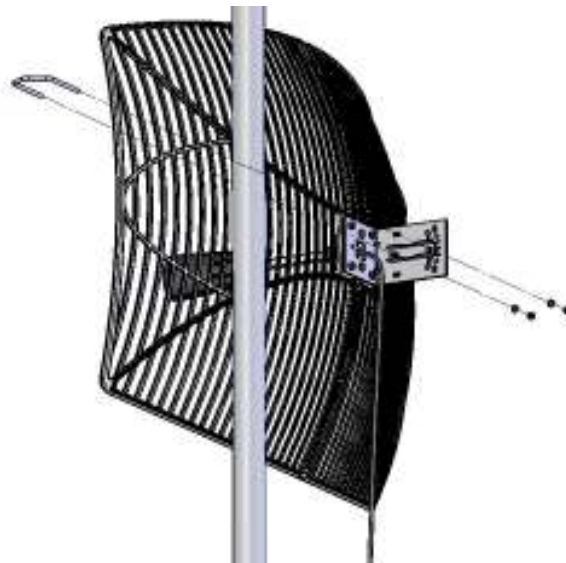
<b>Item</b>	<b>Description</b>	<b>Quantity</b>
	<i>FEED-005</i>	
1	<i>FEED-005 Antenna</i>	1
2	<i>2 X M6x16 cap screws s/s</i>	2
3	<i>M6 star washer</i>	2

### Installation Instructions

1. *The Grid Dish Feed is linearly polarized and should be vertical when mounted on the Grid Dish. See polatization on the back of the dish.*
2. *The Grid Dish Feed comes with two stainless steel cap screws and star washers for dish mounting.*
3. *Ensure that the Dish is fastened together correctly and Pole mount bracket is properly secured to the dish. Vertically align the inserts on the Feed base with those of the Grid dish then fasten the screws through the pole mount bracket. Note that the feed can easily be mounted on the Grid Dish while the dish is already mounted on the mast.*
4. *Strian relieve the feed cable to the mast with a cable tie or weatherproof tape.*
5. *Connect the antenna to the radio device.*



**Figure 1: Illustration of Feed mounting to Grid Dish**



**Figure 2: Illustration of Grid Dish to mast**